

# Clinical Hematology & Oncology

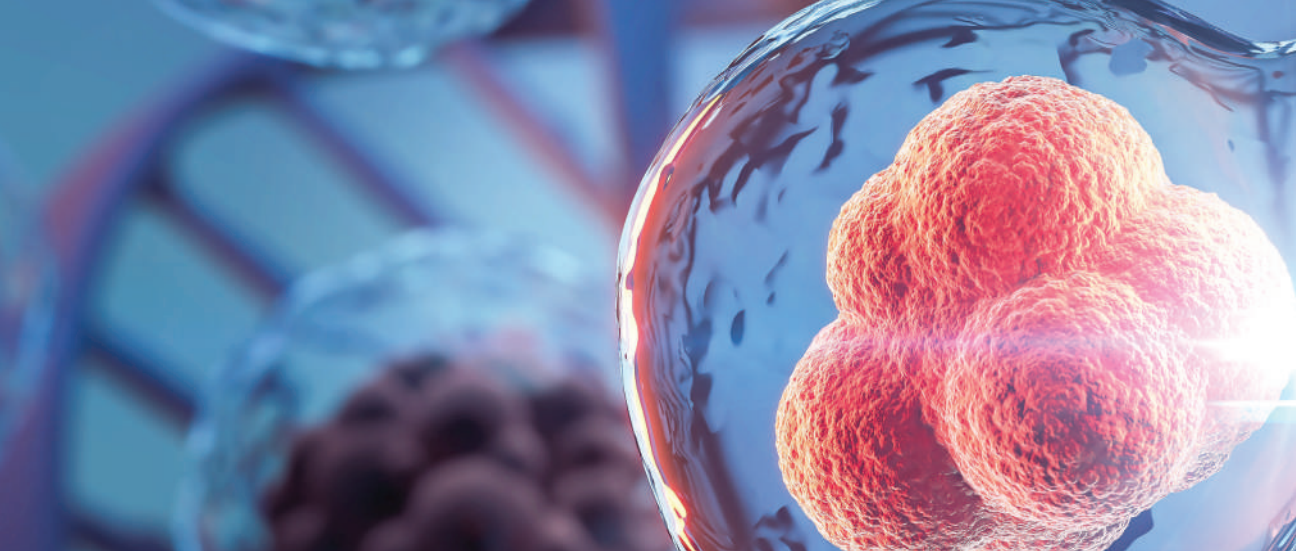
Presented by Scripps Cancer Center

**FEBRUARY 15-17, 2025**

Hyatt Regency La Jolla  
at Aventine • San Diego, CA

Visit [www.scripps.org/HemOncCME](http://www.scripps.org/HemOncCME)  
for conference updates!





**T**he Scripps Cancer Center's Clinical Hematology and Oncology conference is designed for hematologists, oncologists, surgeons, radiation oncologists, internists, and others desiring an update in these specialty areas. The primary objective of this course is to bring together clinicians and leading experts in diverse areas of hematology and oncology, affording them an intimate environment in which to discuss new clinical developments and significant advances. Our annual program is a nationally accredited continuing medical education conference and is one of the largest annual hematology/oncology meeting held in the West, among others such as ASH, ASCO and the San Antonio Breast Cancer Symposium. This conference is one of the few that combines topics in both hematology and oncology.

### **Educational Objectives**

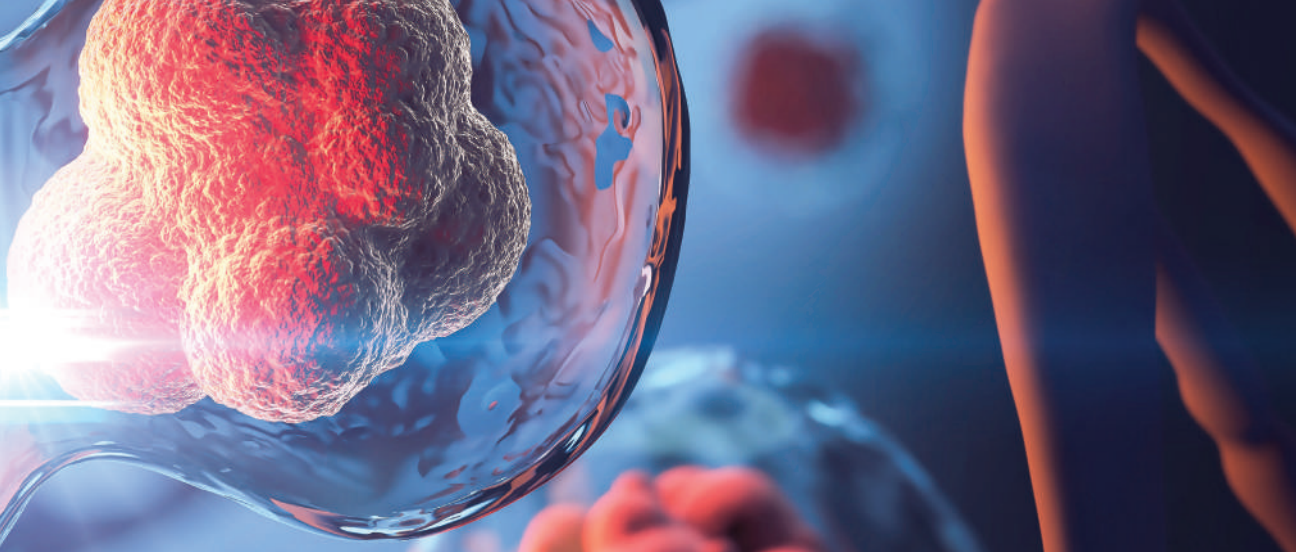
**After attending this live activity, participants should be able to:**

- Describe the clinical and molecular facets of pathogenesis, diagnostic approaches, and therapeutic modalities available for various hematologic disorders.
- Select and apply the changing approaches to hematologic malignancies, particularly as they relate to evidence-based standards of care, including innovations in diagnosis and treatment.
- Choose new therapeutic options for the treatment of several common malignancies, understanding appropriate indications and contraindications to these therapeutic approaches.
- Integrate evolving approaches to solid tumors and breast cancer from both a diagnostic, prognostic, and therapeutic perspective.
- Apply practical expertise gained from the clinical situations discussed in the panel sessions with an emphasis on data-based approaches to patients with common, but serious hematology oncology conditions.

### **Target Audience**

- Hematologists/Oncologists
- Medical Oncologists
- Radiation Oncologists
- Surgeons
- Internists
- And others desiring an update in these specialty areas





## Accreditation and Disclosure

### Physicians

Scripps Health is accredited by the Accreditation Council for Continuing Medical Education (ACCME) to provide continuing medical education for physicians.

Scripps Health designates this live activity for a maximum of 20 *AMA PRA Category 1 Credit(s)*.™ Physicians should only claim credit commensurate with the extent of their participation in the activity.

### American Board of Internal Medicine (ABIM)

Successful completion of this CME activity, which includes participation in the evaluation component, enables the participant to earn up to 20 Medical Knowledge MOC points in the American Board of Internal Medicine's (ABIM) Maintenance of Certification (MOC) program. It is the CME activity provider's responsibility to submit participant completion information to ACCME for the purpose of granting ABIM MOC credit.

### American Board of Pathology (ABPATH)

Successful completion of this CME activity enables the learner to earn 20 Lifelong Learning (CME) credit toward the CME requirement(s) of the American Board of Pathology's Continuing Certification program. It is the CME activity provider's responsibility to submit learner completion information to ACCME for the purpose of granting ABP credit.

### American Board of Surgery (ABS)

Successful completion of this CME activity enables the learner to earn credit toward the CME requirement(s) of the American Board of Surgery's Continuous Certification program. It is the CME activity provider's responsibility to submit learner completion information to ACCME for the purpose of granting ABS credit.

### Nurses and Nurse Practitioners

For the purpose of recertification, the American Nurses Credentialing Center accepts *AMA PRA Category 1 Credit(s)*™ issued by organizations accredited by the ACCME.

For the purpose of re-licensure, the California Board of Registered Nursing accepts *AMA PRA Category 1 Credit(s)*™ for attendance at structured learning activities offered by organizations accredited by the ACCME.

The American Academy of Nurse Practitioners Certified Program (AANPCP) and the American Association of Nurse Practitioners (AANP) accept *AMA PRA Category 1 Credit(s)*™ from organizations accredited by the ACCME.

### Physician Assistants

PAs may claim a maximum of 20 Category 1 credits for completing this activity. NCCPA accepts *AMA PRA Category 1 Credit(s)*™ from organizations accredited by the ACCME.

### Pharmacists

The California Board of Pharmacy accepts as continuing professional education those courses that meet the standard of relevance to pharmacy practice and have been approved for *AMA PRA Category 1 Credit(s)*.™

### Commercial Support

This course is supported, in part, by educational grants from industry. In accordance with the ACCME Standards for Integrity and Independence in Accredited Continuing Education, a complete list of commercial support received will be provided to all learners who participate in the continuing education activity. For more information: [www.accme.org/standards](http://www.accme.org/standards)

# Clinical Hematology & Oncology 2025 Conference Agenda

## Friday, February 14, 2025

5-7 p.m. **Early Registration & Welcome Dinner**  
*Join us in the Del Mar breakout room for a complimentary dinner! This informal, buffet-style dinner will span over a 2-hour period as guests arrive to the hotel. Pre-registration is not required.*

## Saturday, February 15, 2025

7 a.m. Registration, Breakfast & View Exhibits

7 a.m. **Non-CME Breakfast Symposium**  
*Hosted by Pfizer*

7:55 a.m. **Welcome & Educational Overview**

8 a.m. **Peri-operative Thrombocytopenia**  
*Ted Warkentin, MD*

8:30 a.m. **Hormonal Therapy and Thrombosis Risk**  
*Damon Houghton, MD*

9 a.m. **Barely Abnormal CBCs**  
*Alice Ma, MD*

9:30 a.m. **Panel Discussion/Q&A**

10 a.m. Break & View Exhibits

10:15 a.m. **Antiphospholipid Syndrome: 2024 Update**  
*Stephan Moll, MD*

10:45 a.m. **Hypereosinophilic Syndrome**  
*Jason Gotlib, MD*

11:15 a.m. **Investigating Bleeding of an Obscure Cause**  
*Menaka Pai, MD*

11:45 a.m. **Panel Discussion/Q&A**

Noon Lunch

Noon **Non-CME Lunch Symposium**  
*Hosted by Agios Pharmaceuticals*

Noon **Non-CME Lunch Symposium**  
*Hosted by AstraZeneca*

1 p.m. **What's New in AML**  
*Monzr Al Malki, MD*

1:30 p.m. **Should Patients Still Undergo BMT for Myeloma?**  
*Morie Gertz, MD*

2 p.m. **Evolving Therapeutic Approaches in Patients with Low-risk MDS**  
*Aref Al-Kali, MD*

2:30 p.m. **Panel Discussion/Q&A**

2:45 p.m. Break & View Exhibits

3:15 p.m. **Clinical Updates in B-ALL**  
*Wendy Stock, MD*

3:45 p.m. **Refractory Diffuse Large Cell Lymphoma**  
*Stephen Schuster, MD*

4:15 p.m. **HLH and HLH-like Inflammatory Syndromes**  
*TBD*

4:45 p.m. **Panel Discussion/Q&A**

### CONCURRENT BREAKOUT SESSIONS

5:15 p.m. **Breakout #1: Interesting Cases in Thrombosis**  
*Stephan Moll, MD*

**Breakout #2: Interesting Cases in Thrombocytopenia**  
*Ted Warkentin, MD*

**Breakout #3: Interesting Cases in Bleeding**  
*Alice Ma, MD*

**Breakout #4: Interesting Cases in Plasma Cell Dyscrasias**  
*Morie Gertz, MD*

6:15 p.m. Adjourn

## Sunday, February 16, 2025

7 a.m. Breakfast & View Exhibits

7 a.m. **Non-CME Breakfast Symposium**  
*Hosted by Pfizer*

7 a.m. **Non-CME Breakfast Symposium**  
*Hosted by GSK*

7:55 a.m. **Welcome & Announcements**

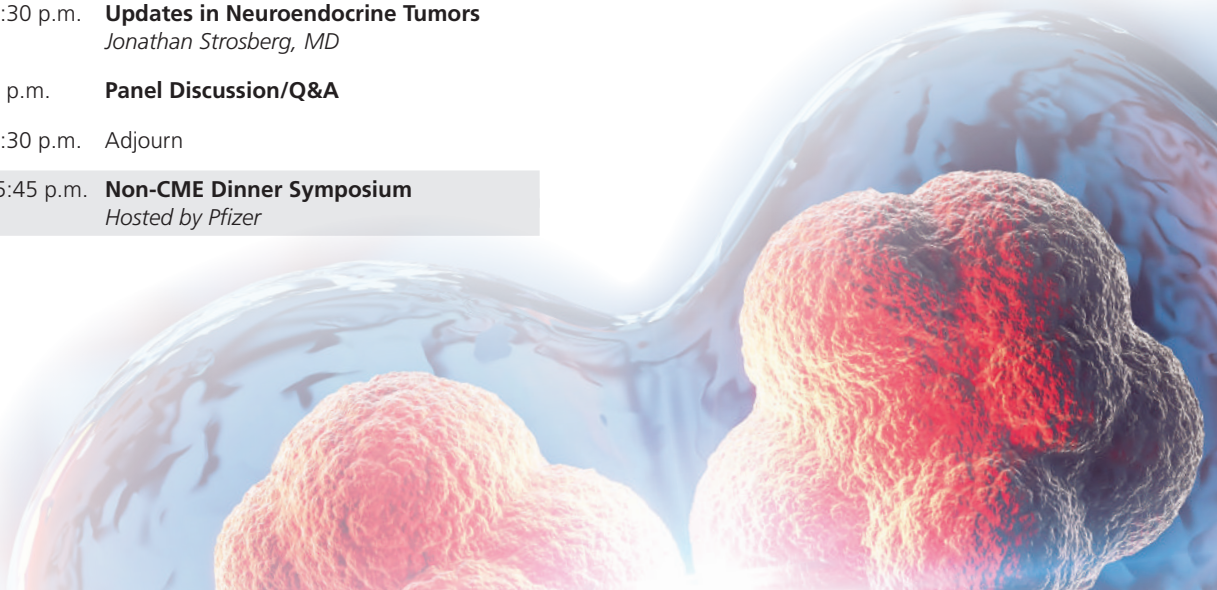
8 a.m. **Ultra Low Her2 Breast Cancer: Pushing the Boundary in IHC 0 and Treatment Implications**  
*Rena Callahan, MD*

8:30 a.m. **Changing Landscape of Sequencing in HR Positive, Her2 Negative Metastatic Breast Cancer**  
*Aditya Bardia, MD*

- 9 a.m. **Sequencing Therapies in Early Triple Negative Breast Cancer**  
*Laura Huppert, MD*
- 9:30 a.m. **Panel Discussion/Q&A**
- 10 a.m. Break & View Exhibits
- 10:30 a.m. **Neoadjuvant and Adjuvant Therapy for Melanoma**  
*Gregory Daniels, MD*
- 11 a.m. **Management of Variant Histology Renal Cell Carcinoma**  
*Sumanta Pal, MD*
- 11:30 a.m. **Targeted Therapies in Central Nervous System Metastasis**  
*Seema Nagpal, MD*
- Noon **Panel Discussion/Q&A**
- 12:30 p.m. Lunch
- 12:30 p.m. **Non-CME Lunch Symposium**  
*Hosted by Lilly*
- 1:30 p.m. **Rectal Cancer—Making Sense of TNT, ctDNA, and Surgery: A Case-based, Multidisciplinary Discussion**  
*Michael Overman, MD—Medical Oncology*  
*Brian Bednarski, MD—Rectal Surgery*  
*Eugene Koay, MD—Radiation Oncology*
- 3 p.m. **Panel Discussion/Q&A**
- 3:30 p.m. Break & View Exhibits
- 4 p.m. **New Targeted Therapies for Gastroesophageal Cancer**  
*J.Randolph Hecht, MD*
- 4:30 p.m. **Updates in Neuroendocrine Tumors**  
*Jonathan Strosberg, MD*
- 5 p.m. **Panel Discussion/Q&A**
- 5:30 p.m. Adjourn
- 5:45 p.m. **Non-CME Dinner Symposium**  
*Hosted by Pfizer*

## Monday, February 17, 2025

- 7 a.m. Breakfast & View Exhibits
- 7:55 a.m. **Welcome & Announcements**
- 8 a.m. **Role of Immune Therapy in Advanced Endometrial Cancer**  
*Ramez Eskander, MD*
- 8:30 a.m. **Updates in the Treatment of Metastatic Soft Tissue Sarcoma**  
*Mark Agulnik, MD*
- 9 a.m. **Genomic Risk Stratification and High Sensitivity Imaging in Localized Prostate Cancer**  
*Tanya Barauskas Dorff, MD*
- 9:30 a.m. **Panel Discussion/Q&A**
- 10 a.m. Break & View Exhibits
- 10:30 a.m. **Optimal Management of ALK Rearranged NSCLC**  
*Kamya Sankar, MD*
- 11 a.m. **Evidence-Based Management of Hormone Deprivation Symptoms After Cancer**  
*Jennifer Litton, MD*
- 11:30 a.m. **Prevention, Monitoring, and Long-Term Follow-Up of Cardiovascular Complications in Cancer Survivors**  
*Eric Yang, MD*
- Noon **Panel Discussion/Q&A**
- 12:30 p.m. Final Adjournment
- Topics, times, and speakers are subject to change.*



# Conference Location & Hotel Information

Hyatt Regency La Jolla at Aventine • 3777 La Jolla Village Drive • San Diego, CA 92122

Reservations: 888-421-1442 • Phone: 858-552-1234

*Discounted rooms available—see course website for details*

## Rates and Reservations

Please make your own hotel reservations and request the Scripps conference reduced rate of \$249 per night (plus tax). This low rate also includes:

- Waived resort fee
- Complimentary guestroom internet service
- Discounted overnight self-parking
- Complimentary use of the fitness center

**Make your reservations early! A block of rooms is being held for us at the special rate of \$249 per night until January 23, 2025 or until the room block fills, whichever comes first.** After this date, reservations will be accepted on a space and rate availability basis only. Be sure to mention that you are attending the Scripps hematology/oncology conference when making your reservations to receive the reduced rate.

**Please note:** Attendees who book their room through an online, third-party service (Hotels.com,<sup>®</sup> Expedia.com,<sup>®</sup> Priceline.com,<sup>®</sup> etc.) are not eligible to receive the amenities listed above.

## Register Online

### Conference Fees & Registration

Space is limited, so register early!

### In-Person Registration Rates

**In-Person Included:** Course tuition, breakfast, breaks, lunch, internet access, electronic course materials, and course recordings

**Not Included:** Travel costs, lodging, parking, and dinners



	Thru Dec 30	Dec 31-Feb 12	Onsite after Feb 12
Physicians (MD, DO, MBBS)	\$650	\$700	\$750
RN, NP, PA, Other	\$450	\$500	\$550
Students, Residents, Fellows*	\$300	\$350	\$400
Scripps Physicians**	\$500	\$550	\$600
Scripps Non-Physicians**	\$350	\$400	\$450

### Virtual Registration Rates

**Included with Virtual Registration:** Course tuition, live stream, electronic course materials, and recordings.

	Thru Feb 12	After Feb 12
Physicians (MD, DO, MBBS)	\$600	\$700
RN, NP, PA, Other	\$400	\$500
Students, Residents, Fellows*	\$250	\$350
Scripps Physicians**	\$450	\$550
Scripps Non-Physicians**	\$300	\$400

\*TO RECEIVE THE STUDENT, RESIDENT, FELLOW REGISTRATION DISCOUNT, PLEASE EMAIL OR CALL SCRIPPS CME AND PROVIDE PROOF OF YOUR STATUS.

\*\*MUST USE A VALID SCRIPPS EMAIL ADDRESS AT REGISTRATION.

# Faculty

## Course Director



**Darren Sigal, MD**

Assistant Director, Division of Hematology & Oncology  
Scripps Clinic  
La Jolla, California

## Planning Committee

**Munveer Bhangoo, MD**  
Hematologist, Oncologist  
Scripps Clinic  
La Jolla, California

**Kathryn Bollin, MD**  
Director, Hematology/Oncology Fellowship Program  
Clinical Associate Professor of Medicine  
Division of Hematology/Oncology  
Scripps Cancer Center  
San Diego, California

**Thomas Buchholz, MD, FACR, FASTRO**  
Corporate Senior Vice President  
Medical Director, Scripps Cancer Center  
Chief Scientific Officer  
Scripps Health  
La Jolla, California

**David Hermel, MD**  
Hematologist, Oncologist  
Scripps Clinic  
La Jolla, California

**James Mason, MD**  
Chair, Department of Academic Affairs  
Associate VP, Medicine Services  
Head, Division of Hematology/Oncology  
Scripps Clinic  
La Jolla, California

**Alan Saven, MD**  
Hematologist, Oncologist  
Scripps Clinic  
La Jolla, California

### Faculty Disclosure

*In accordance with the ACCME Standards for Integrity and Independence in Accredited Continuing Education, course directors, planners, moderators, faculty, and all others in control of the educational content of the continuing education activity must disclose all financial relationships with ineligible companies that they may have had within the past 24 months. If an individual refuses to disclose financial relationships, they will be disqualified from being a part of the planning and implementation of the activity. Owners and/or employees of an ineligible company with business lines or products relating to the content of the activity will not be permitted to participate in the planning or execution of any accredited program. All relevant financial relationships with ineligible companies listed for individuals in control of content have been mitigated.*

*A complete listing of faculty disclosures associated with this program can be found on the conference website: [www.scripps.org/HemOncCME](http://www.scripps.org/HemOncCME)*

## Attendance Policies

### Attendee Cancellation, Substitution and Refund

The course tuition is refundable, minus a \$100 processing fee (MD, DO, RN, PA, NP) or a \$50 processing fee (Fellow, Resident, Student), if your cancellation is received in writing no later than **Friday, January 31, 2025**. Attendee substitutions are allowed, but notification must be made in writing by **Friday, January 31, 2025**. After this date, under no circumstances will refunds, credits, or substitutions be granted. No refunds or credits will be given to "no shows." No refunds shall be made for cancellations due to inclement weather.

### Registration Changes

All registration changes (virtual to in-person or in-person to virtual) are subject to a \$50 change fee when received within two weeks of the conference. If you need to make changes to your registration, please contact Scripps Conference Services & CME at 858-678-6400 or [med.edu@scrippshealth.org](mailto:med.edu@scrippshealth.org).

### Scripps Conference Modification or Cancellation

Scripps reserves the right to modify the course's schedule or program as necessary. Scripps also reserves the right to cancel this conference,

in which case a full refund of the registration fee will be provided.

Attendees who purchase non-refundable airline tickets do so at their own risk. Scripps encourages the purchase of travel insurance as we are unable to refund any travel costs (flight, hotel, etc.) in the case of Scripps cancellation.

### Family and Guest Attendance Policy

All conference activities and meals are exclusively reserved for paid conference attendees. Children and family members are not allowed to attend meal functions or permitted in the meeting space.

### Health and Safety Waiver and Assumption of Risk

By completion and submission of the online registration form, participants certify they have read and fully understand the Health and Safety Waiver and Assumption of Risk Agreement.

### Recording and Photography Clause

Scripps reserves exclusive rights to record (audio and video) and/or photograph all conference proceedings for use in marketing materials, presentations and course content sales.