

# SCRIPPS DIABETES

## PROFESSIONAL EDUCATION AND TRAINING PROGRAMS 2014

### Educational Objectives

**After attending this activity, participants should be able to:**

- Incorporate American Diabetes Association and American Association of Clinical Endocrinologists “Standards of Diabetes Care” guidelines into the clinical management of the patient with diabetes.
- Address cultural beliefs and myths which can act as a barrier to clinical care and patient self management.
- Educate the patient and family regarding nutrition therapy, lifestyle and behavior change tools, and prevention and treatment of acute and chronic complications.
- Select appropriate pharmacological therapies considering the patient’s individualized glycemic goal, physical status, financial and self care capabilities.

### Target Audience

- Physicians
- Registered Nurses / Licensed Vocational Nurses
- Registered Dietitians
- Nurse Practitioners
- Physician Assistants
- Pharmacists
- Medical Assistants
- Health Educators

### Class Descriptions

**8a.m. to 4:30 p.m.**

#### The Fundamentals of Diabetes Management

Learn the latest pathophysiology, clinical practice recommendations, pharmacologic treatments, medical nutrition therapy and tools for behavior change. Identify safe glucose goals for individual patients and learn how to use your own glucose meter. Interactive and filled with patient case studies, this valuable program provides you with an excellent foundation and up-to-date understanding of diabetes.

**Cost \$75**

- Thursday, March 27, 2014
- Wednesday, May 28, 2014
- Wednesday, August 13, 2014
- Wednesday, October 22, 2014

**8a.m. to 4:30 p.m.**

#### Insulin and Incretin Management Across the Continuum of Care – Emerging Trends and Technology

Learn about the latest Standards of Care, insulin, and incretin treatment recommendations for outpatients, inpatients, and patients in long-term care. Learn about the newest analog insulin actions and incretins. Experience advanced carbohydrate counting and special considerations for the hospitalized patient. Calculate, titrate basal and bolus insulin doses, and recognize glucose patterns for type 1 and type 2 diabetes. Increase your understanding of insulin pump therapy and continuous glucose monitoring therapy. Practice with insulin pen devices. Engage in patient-centered case study discussions and the selection of appropriate patient glucose goals. Identify specific causes, risk factors and treatment of hypoglycemia and hyperglycemia across care settings.

**Cost \$75**

- Friday, March 28, 2014
- Thursday, May 29, 2014
- Thursday, August 14, 2014
- Thursday, October 23, 2014

**8a.m. to 2 p.m.**

#### Chronic Disease Management in Diverse Populations – Diabetes, Hypertension, and Dyslipidemia

Transcend cultural barriers and embrace a transcultural approach to chronic disease management with training on basic concepts for implementing the chronic care model in a primary care environment with a focus on diverse at-risk communities. Case study reviews will tackle the most common cultural challenges that prevent diabetes, hypertension and lipid management intensification. Training tips and multi-cultural teaching tools will be shared. Engage in discussions about the lessons from the Transcultural Diabetes-specific Nutrition Algorithm (tDNA) and how to conduct peer-led self-management education programs.

**Cost \$60**

- Friday, August 15, 2014
- Friday, October 24, 2014

**8a.m. to 4:30 p.m.**

#### Five Day Comprehensive Diabetes Education and Management Program

In addition to pathophysiology and treatment of type 1, type 2, and gestational diabetes, this intensive and highly interactive program explores diabetes care of the complete person including; clinical assessment and foot examination, goal setting and behavior change strategies, and depression screening. Clinical management balanced with psychosocial and cultural beliefs, and patient education tools, makes this 5 day well rounded program perfect for the healthcare provider who seeks to provide excellent diabetes care.

**Cost \$425**

- April 23, 24, 25, 28, and 29, 2014
- September 24, 25, 26 29 and 30, 2014

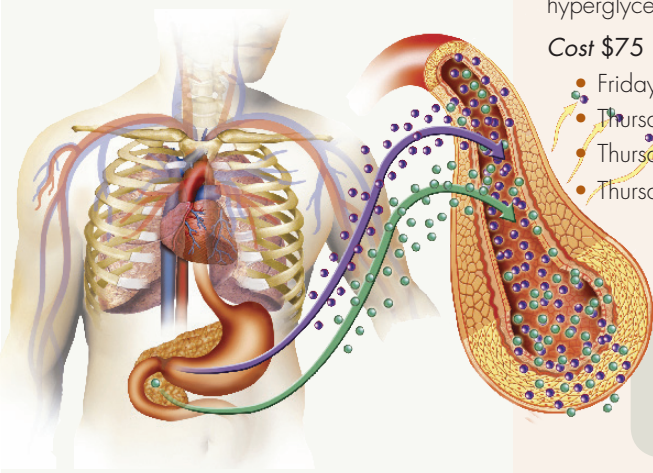
Attending The Fundamentals of Diabetes Management class is highly recommended prior to attending all other diabetes classes.

### FOLLOW US!

[www.twitter.com/scrippshealth](http://www.twitter.com/scrippshealth)  
[www.facebook.com/ScrippsCME](http://www.facebook.com/ScrippsCME)  
[www.youtube.com/scrippshealth](http://www.youtube.com/scrippshealth)



Subscribe to our Scripps Conference Services & CME newsletter at [www.scripps.org/CMEemails](http://www.scripps.org/CMEemails)



## Accreditation & Disclosure & About Scripps

Scripps Health is accredited by the Accreditation Council for Continuing Medical Education (ACCME) to provide continuing medical education for physicians.

Documentation of awarded credit is provided for registered attendees in exchange for a completed activity evaluation. Certificates of attendance are available, upon request, at the end of the course. Physicians should only claim credit commensurate with the extent of their participation in the activity.

### Accreditation Breakdown:

#### The Fundamentals of Diabetes Management

- Scripps Health designates this live activity for a maximum of 7.5 AMA PRA Category 1 Credit(s)<sup>™</sup>.
- Provider approved by the California Board of Registered Nursing, Provider Number CEP15199 for 9 contact hours.
- This program has been approved by the Commission on Dietetic Registration for 7 CPEUs.

#### Insulin and Incretin Management Across the Continuum of Care – Emerging Trends and Technology

- Scripps Health designates this live activity for a maximum of 7.5 AMA PRA Category 1 Credit(s)<sup>™</sup>.
- Provider approved by the California Board of Registered Nursing, Provider Number CEP15199 for 9 contact hours.
- This program has been approved by the Commission on Dietetic Registration for 7 CPEUs.

#### Chronic Disease Management in Diverse Populations – Diabetes, Hypertension, and Dyslipidemia

- Scripps Health designates this live activity for a maximum of 5 AMA PRA Category 1 Credit(s)<sup>™</sup>.
- Provider approved by the California Board of Registered Nursing, Provider Number CEP15199 for 6 contact hours.
- This program has been approved by the Commission on Dietetic Registration for 5 CPEUs.

#### Five Day Comprehensive Diabetes Education and Management Program

- Scripps Health designates this live activity for a maximum of 34.25 AMA PRA Category 1 Credit(s)<sup>™</sup>.
- Provider approved by the California Board of Registered Nursing, Provider Number CEP15199 for 41.10 contact hours.
- This program has been approved by the Commission on Dietetic Registration for 34 CPEUs.

## Disclosure

### Commercial Support

This course is supported, in part, by educational grants from industry, in accordance with ACCME accreditation Standards for Commercial Support. At the time of printing, a complete listing of commercial supporters was not available. Appropriate acknowledgement will be given to all supporters at the time of the educational activity.

### Cultural and Linguistic Competency

This activity is in compliance with California Assembly Bill 1195 which requires that all CME activities comprising a patient care element include curriculum addressing the topic of cultural and linguistic competency. The intent of this bill is to ensure that health care professionals are able to meet the cultural and linguistic concerns of a diverse patient population through effective and appropriate professional development. Cultural and linguistic competency was incorporated into the planning of this activity.

### Faculty Disclosure

#### Course Director

Athena Philis-Tsimikas, MD

Corporate Vice President  
Scripps Whittier Diabetes Institute  
La Jolla, California

In accordance with the ACCME Standards for Commercial Support, course directors, planning committees, faculty and all others in control of the educational content of the CME activity must disclose all relevant financial relationships with any commercial interest that they or their spouse/partner may have had within the past 12 months. If an individual refuses to disclose relevant financial relationships, they will be disqualified from being a part of the planning and implementation of this CME activity. Employees of a commercial interest with business lines or products relating to the content of the CME activity will not participate in the planning or any accredited portion of the conference. Disclosure will be made to all participants at the conference location, prior to the educational activity commencement.

## CONFERENCE REGISTRATION

### Three Easy Ways to Register

Online scripps.org/conferenceservices

Fax 858-652-5565

Mail Scripps Conference Services & CME  
Whittier Prof. & Educational Training Programs 2014  
11025 North Torrey Pines Road  
Suite 200, Maildrop: SCRC 200, La Jolla, CA 92037

### Questions

Contact Scripps Conference Services & CME

Phone 858-652-5400

Email med.edu@scrippshealth.org

### Please check the course(s) and dates you wish to attend:

**The Fundamentals of Diabetes Management** \$75

#### Select one:

- Thurs., Mar. 27, 2014       Wed., Aug. 13, 2014  
 Wed., May 28, 2014       Wed., Oct. 22, 2014

**Insulin and Incretin Management Across the Continuum of Care – Emerging Trends and Technology** \$75

#### Select one:

- Fri., March 28, 2014       Thurs., Aug. 14, 2014  
 Thurs., May 29, 2014       Thurs., Oct. 23, 2014

**Chronic Disease Management in Diverse Populations – Diabetes, Hypertension, and Dyslipidemia** \$60

#### Select one:

- Fri., Aug. 15, 2014       Fri., Oct. 24, 2014

**Five Day Comprehensive Diabetes Education and Management Program** \$425

#### Select one:

- April 23, 24, 25, 28, and 29, 2014  
 September 24, 25, 26 29 and 30, 2014

## Attendance Policies

### Registration Confirmation

A confirmation letter will be e-mailed or mailed to you upon receipt of the conference registration form and payment. If you have not received it within two weeks, please contact the Scripps Conference Services & CME office.

### Attendee Cancellation, Substitution, Refund

The course tuition is refundable, minus a \$25 processing fee if your cancellation is received in writing no later than one week prior to the course. Attendee substitutions are allowed, but notification must be made in writing no later than one week prior to the course. After this date, under no circumstances will refunds, credits, or substitutions be granted. No refunds or credits will be given to "no shows."

### Scripps Conference Modification or Cancellation

Scripps reserves the right to modify the course's schedule or program as necessary. Scripps also reserves the right to cancel this conference, in which case a full refund of the registration fee will be provided. We are unable to refund any travel costs (flight, hotel, etc.) in the case of Scripps cancellation.



# SCRIPPS DIABETES

PROFESSIONAL EDUCATION AND TRAINING PROGRAMS 2014 REGISTRATION FORM

### Conference Fees

Space is limited, so register early! **Included:** Course tuition, course materials/syllabus **Not Included:** Travel costs, lodging, parking

### Conference Location

All Professional and Educational Training Programs will be held at the Scripps Whittier Diabetes Institute.

### Scripps Whittier Diabetes Institute

10140 Campus Point Drive, 1st Floor  
San Diego, California 92121  
[www.scripps.org/whittier](http://www.scripps.org/whittier)

Would you like to receive the Scripps Conference Services & CME Email Newsletter?  Yes  No

By completing this registration form and returning it to Scripps you are acknowledging compliance with all attendance policies.

Please print clearly. Should we have any conference communications or updates please provide your direct contact information.

FIRST, MI, LAST NAME \_\_\_\_\_ DEGREE (MD, DO, PHD, RN, ETC) \_\_\_\_\_

AFFILIATION/HOSPITAL/COMPANY \_\_\_\_\_ SPECIALTY \_\_\_\_\_

DIRECT MAILING ADDRESS \_\_\_\_\_

CITY/STATE/ZIP \_\_\_\_\_

DIRECT TELEPHONE \_\_\_\_\_ FAX \_\_\_\_\_

E-MAIL \_\_\_\_\_

 Please indicate any special needs (including dietary restrictions): *Special requests will be considered and accommodated in full compliance with the Americans with Disabilities Act (ADA).*

Office Use Only:	Date Received	Amount	Check No. / Approval CD	Confirmation Sent	Initials
------------------	---------------	--------	-------------------------	-------------------	----------

### PAYMENT METHOD

If paying by credit card, please fill out the information below.

..... Visa ..... MasterCard ..... Amex ..... Discover

CREDIT CARD NUMBER \_\_\_\_\_ EXPIRATION DATE \_\_\_\_\_ SECURITY CODE \_\_\_\_\_

NAME ON CARD \_\_\_\_\_ SIGNATURE \_\_\_\_\_

BILLING ADDRESS (if different from above) \_\_\_\_\_